



## Supplementary Material

# Prevalence of Extended Spectrum $\beta$ -lactamase *SHV* and *OXA* Producing Gram Negative Bacteria at Tertiary Care Hospital of Lahore, Pakistan

Abdul Waheed<sup>1,2</sup>, Sidrah Saleem<sup>1</sup>, Naveed Shahzad<sup>3</sup>, Junaid Akhtar<sup>4</sup>,  
Muhammad Saeed<sup>5</sup>, Iqra Jameel<sup>1</sup>, Farhan Rasheed<sup>6</sup> and Shah Jahan<sup>7,\*</sup>

<sup>1</sup>Department of Microbiology, University of Health Sciences, Lahore, Pakistan

<sup>2</sup>College of Allied Health Professional, Directorate of Medical Sciences, Government College University Faisalabad, Pakistan

<sup>3</sup>School of Biological Sciences, University of the Punjab, Lahore, Pakistan.

<sup>4</sup>Department of Allied Health Sciences, Sargodha Medical College, University of Sargodha, Sargodha, Pakistan

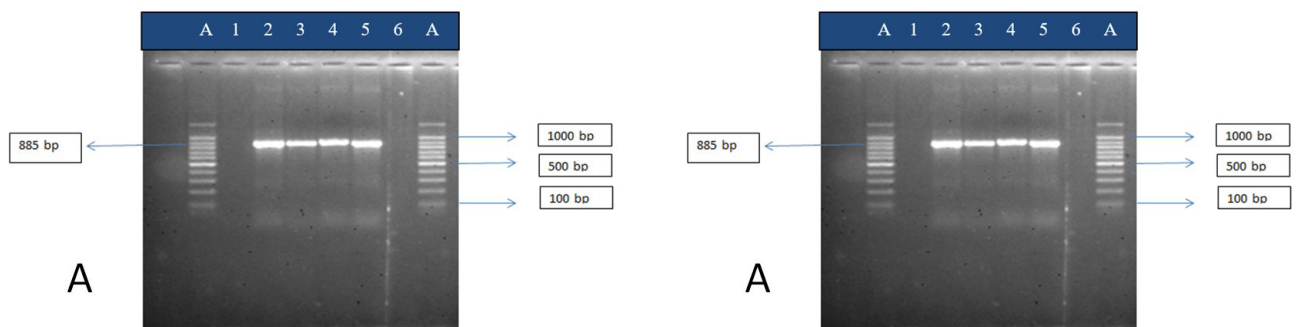
<sup>5</sup>Pathology Department, DHQ Hospital, Mandi Bahauddin, Pakistan

<sup>6</sup>Department of Microbiology, Allama Iqbal Medical College, Lahore, Pakistan <sup>7</sup>Department of Immunology, University of Health Sciences, Lahore, Pakistan.

\* Corresponding author: shahjahan@uhs.edu.pk

0030-9923/2019/0006-2345\$ 9.00/0

Copyright 2019 Zoological Society of Pakistan



Supplementary Fig. 1. A representative gel displaying 885 bp PCR product of *bla*<sub>SHV</sub> genes and 813 bp product of *bla*<sub>OXA</sub> in representative clinical isolates; 1A: Lane A, the DNA molecular size marker (100bpDNA ladder; Fermentas) Lane1, negative control. Lane 2, known positive control. Lane 3-5 *bla*<sub>SHV</sub> gene positive samples; 1B: Lane A, the DNA molecular size marker (100bpDNA ladder; Fermentas) Lane 1, positive control. Lane 5, known negative control. Lane 2-4, *bla*<sub>OXA</sub> gene positive samples.